

Life Scope E7

Bedside Monitor BSM-5700 Series

Visualize Essential Insights



Visualize Essential Insights

Enhance patient outcomes with the Life Scope E7: Advanced monitoring, seamless connectivity and data utilization ensure patient safety and efficient workflows across all hospital areas.



Life Scope E7 is available in 2 different screen sizes (15.6 inch and 12.1 inch).



Operation Room

Patient conditions can change significantly during surgical procedures. The Life Scope E7 assists in quickly and accurately identifying changes in the patient's perioperative condition, enabling clinical staff to respond with early and appropriate interventions.

Intensive Care Unit

Life Scope E7 provides parameters that are useful for monitoring a wide range of patients, even in intensive care settings. It aids clinical staff in making treatment decisions with information on hemodynamics, neuromonitoring, and respiratory suppression.

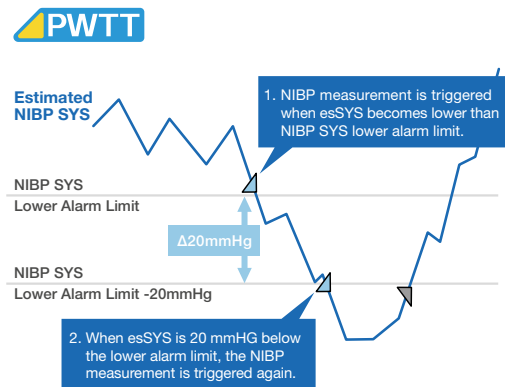
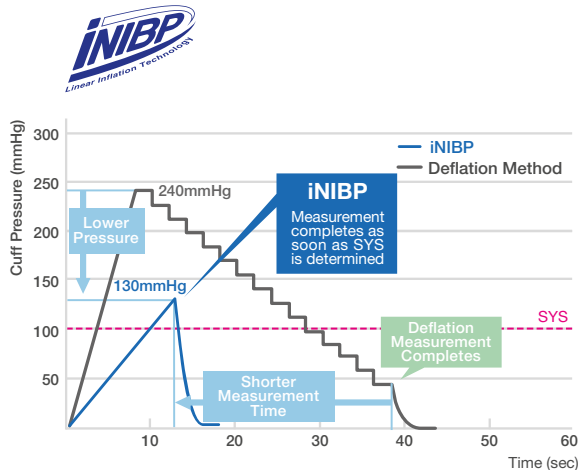
Nihon Kohden System Solutions

Even with the increasing complexity of patient care, we support the improvement of medical care quality by providing an uninterrupted data flow from primary bedside monitoring to secondary data analytics.



Faster Detection, Faster Intervention

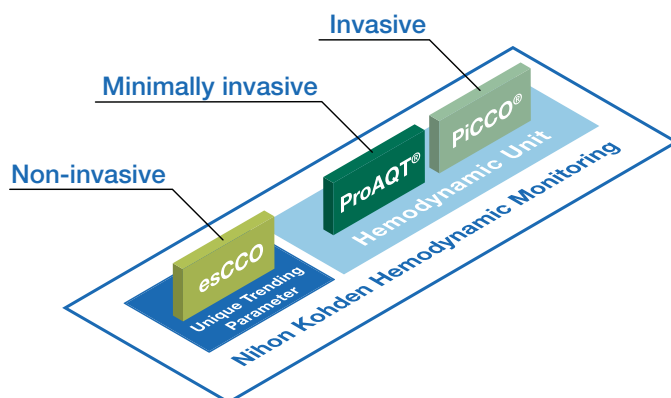
Nihon Kohden's iNIBP technology detects systolic and diastolic blood pressure during cuff inflation, enabling faster, gentler, and non-invasive blood pressure measurement, and supporting smooth anesthesia induction. Additionally, it can initiate automatic NIBP measurement based on a change in PWTT (Pulse Wave Transit Time), helping to detect and react to sudden changes in patient conditions.



Seamless Hemodynamic Adaptation

The Life Scope E7 provides comprehensive hemodynamic monitoring for all patients. Estimated Continuous Cardiac Output (esCCO) is a reliable trend parameter, enabling first level, non-invasive hemodynamic monitoring. This proven technology allows monitoring a larger number of patients and can be measured using standard parameters – ECG, SpO₂ and NIBP.

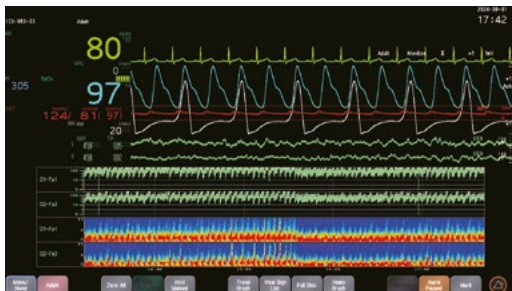
For critically ill patients who require multiple hemodynamic parameters, the minimally invasive ProAQT or PiCCO can be used. This allows for continuous hemodynamic monitoring in many patients, supporting clinical staff in identifying hidden risks in patients and providing a safer environment.



Hemodynamic Unit (AP-170P)

See More, Act Faster

Continuous Neuromonitoring is a highly valuable tool in the ER and ICU. Neuromonitoring provides clinically relevant information about a patient's brain status, helping to predict outcomes and directly supporting clinical decision making. It enables quick data review with various trends, including Density Spectral Array (DSA), Compressed Spectral Array (CSA), and amplitude-integrated EEG (aEEG). The EEG data can be output to EEG viewer systems for consultation with a neurophysiologist when necessary.



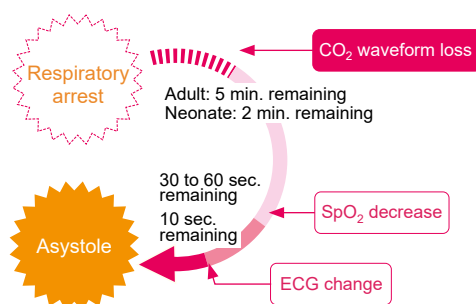
EEG Module (AE-918P)

Breath by Breath Protection: Instant Alerts for Patient Safety

Our respiratory monitoring system ensures patient safety by instantly detecting changes and ventilator malfunctions. It triggers alarms for both intubated and non-intubated patients, allowing healthcare professionals to respond promptly. This system supports seamless monitoring post-ventilator weaning or surgery. It outputs real-time alarm data and integrates with the hospital network via HL7 for comprehensive monitoring.



Mainstream CO₂ Sensor Kit (TG-980P)



Care for Multiple Patients on a Single Screen

The advanced Interbed Function enables the monitoring of two additional patients from separate Operation Rooms, while continuously displaying the current patient on the upper part of the main screen. The Interbed Function enhances the efficient workflow and safety of the patient crossing multiple Operation Rooms.



Easy Operation, Essential Observation

There is no need for complex procedures when measuring additional parameters such as BIS, NMT, and Gas for patients. Life Scope E7 automatically displays the added parameter and adjusts the screen once the corresponding connection cable is plugged in. The simplified operation of vital signs is intended to reduce the risk of missing early signs of deterioration.



Major Options



Recorder Module (WS-570P)



Multi Amp Unit (AA-174P)

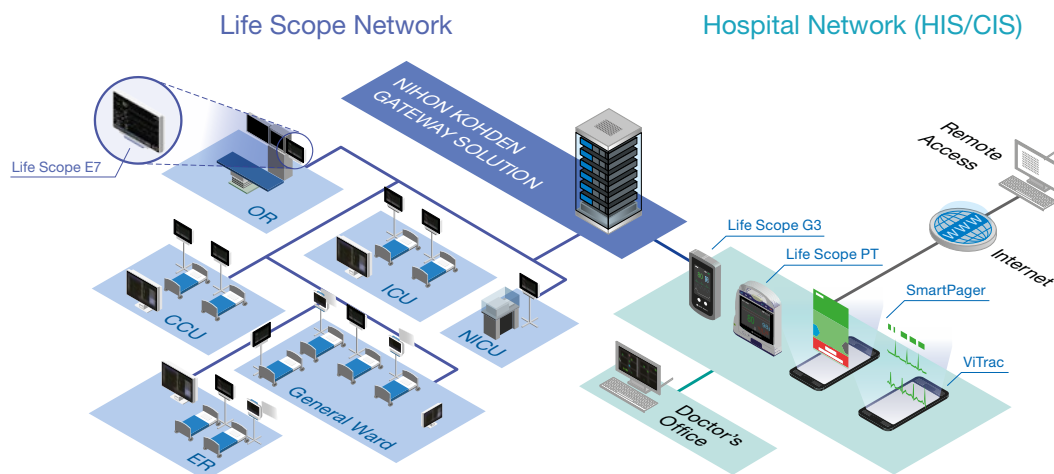


Battery Pack (SB-950P)



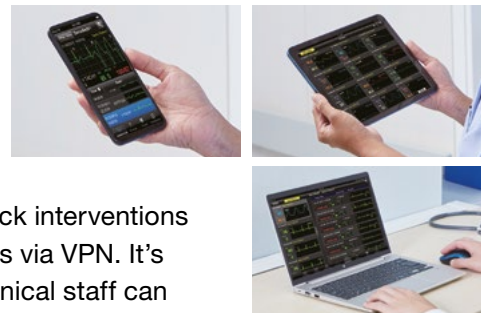
Remote Controller (RY-910PA)

Expanding the Network to all Departments, including through Tele ICU services.



ViTrac System – Anywhere Anytime

The ViTrac app securely monitors patient data from Nihon Kohden patient monitors. It helps reduce infection risk by allowing clinical staff to check vital signs from outside isolation rooms.

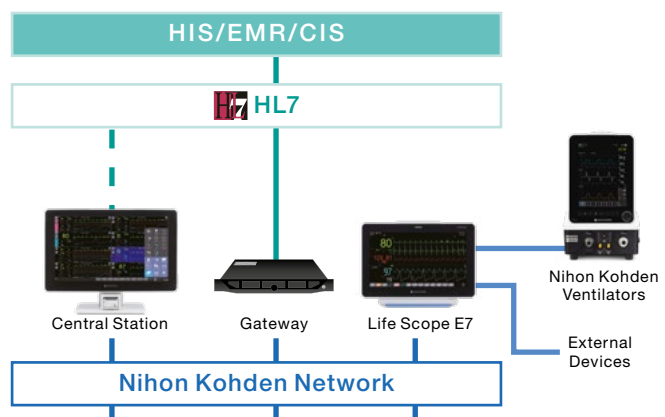


ViTrac provides near real-time health updates, enabling quick interventions to save lives within the hospital network or outside hospitals via VPN. It's compatible with Windows, iOS, and Android devices, so clinical staff can access patient information anywhere, anytime.

Integrated Data with HL7

The Life Scope E7 transmits patient vital signs and alarm data to the EMR system via the HL7 protocol, either directly or through a gateway.

Additionally, it integrates with the HIS to automatically sync patient demographics, reducing manual errors as well as administrative workload.





Improving Healthcare with Advanced Technology

Since its foundation back in 1951, Nihon Kohden's mission has been to improve the quality of life with advanced technology. We provide solutions for diagnosis, critical care, clinical information, and in vitro diagnostics – and we are dedicated to collaborate with you to meet the challenges of healthcare today and tomorrow.

Visit www.nihonkohden.com to find out more.

NIHON KOHDEN EUROPE GmbH
Raiffeisenstrasse 10, 61191 Rosbach, Germany
Phone: +49 6003 827 0, Fax: +49 6003 827 599
Internet: <https://eu.nihonkohden.com>, E-mail: info@nke.de

NIHON KOHDEN CORPORATION
1-31-4 Nishiochiai, Shinjuku-ku, Tokyo 161-8560, Japan
Phone: +81 (3) 59 96-80 36, Fax: +81 (3) 59 96-81 00
Internet: www.nihonkohden.com

BIS is a trademark of Aspect Medical Systems, Inc.
Q2, Q2 Plus and Q-Vue are trademarks of ICU Medical, Inc.
Masimo SET is a trademark of Masimo Corporation.
Apple is a trademark of Apple Inc.
iOS is a trademark of Cisco.
Nellcor and OxiMax are trademarks of Medtronic.